



**Meeting Location Directions:**

The **Carpenter Training Center Annex** is located at 1099 Estes Ave., Elk Grove Village; one block south of Touhy Ave. and one long block west of IL-83 Busse Rd.; 1.5 miles from the west boundary of O'Hare airport.

**From I-90 Northwest Tollway & Elmhurst Road**

Exit Elmhurst Rd. southbound .4 miles to Landmeier Rd. westbound .9 miles to I-83 Busse Rd. or Kingery Hwy southbound .4 miles to Estes Ave. westbound - the CTC **Annex** is on the SW corner of Estes Ave. & Lively Blvd, the parking is on the west side of the **Annex**.

**From I-90 Northwest Tollway & Arlington Heights Road**

Exit Arlington Heights Rd. southbound 1.5 miles to Landmeier Rd. eastbound 1.1 miles to Lively Blvd southbound .5 miles to Estes Ave. eastbound - the CTC **Annex** is on the SW corner of Estes Ave. & Lively Blvd, the parking is on the west side of the **Annex**.

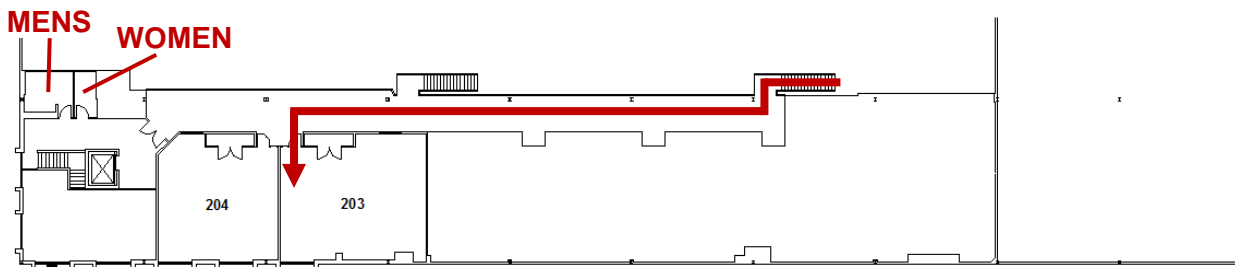
**From I-290 (north of I-355) & Thorndale Avenue**

Exit Thorndale Ave. eastbound 2.5 miles to Lively Blvd northbound 1.5 miles to Estes Ave. eastbound - the CTC **Annex** is on the SW corner of Estes Ave. & Lively Blvd, the parking is on the west side of the **Annex**.

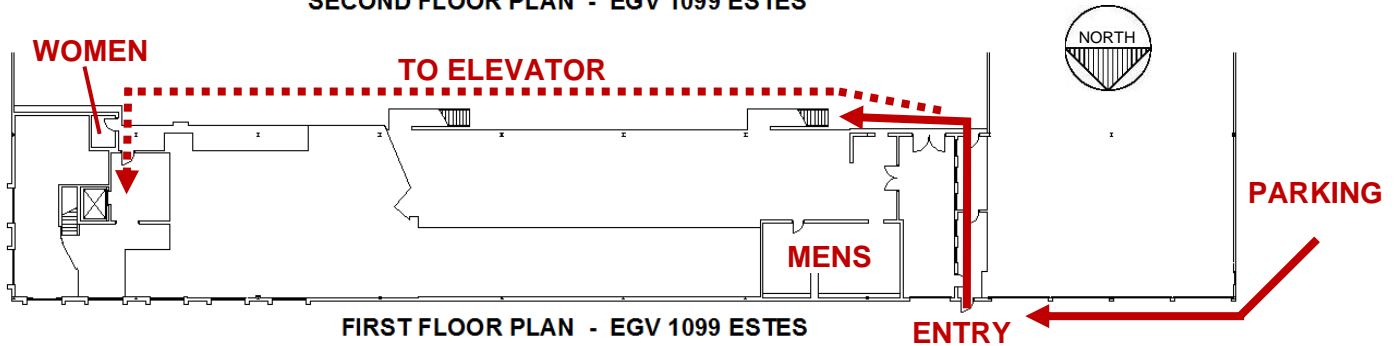
**From I-290 Eisenhower Extension (west of Elmhurst) & I-83 Busse Rd. (Kingery Hwy.)**

Exit I-83 northbound 6 miles to Greenleaf Ave. westbound one long block to Lively Blvd. northbound 1 block to Estes Ave. eastbound - the CTC **Annex** is on the SW corner of Estes Ave. & Lively Blvd, the parking is on the west side of the **Annex**.

**CARPENTER TRAINING CENTER ANNEX**  
**1099 ESTES AVENUE, ELK GROVE VILLAGE, IL**  
**ROOM 203**



**SECOND FLOOR PLAN - EGV 1099 ESTES**



**FIRST FLOOR PLAN - EGV 1099 ESTES**